

THE MOST NIMBLE
TRASH HAULER
ON THE MARKET!

A new and improved

WESTWARD
Industries

HYDRAULIC REFUSE HAULER

800 lb Lift Capacity
10 ft Turning Radius
1.75 Cubic Yard Poly Bin
Automatic Transmission
Street Legal



The **GO-4** XTR

WE ARE PROUD TO INTRODUCE OUR NEW GO-4 XTR – REFUSE HAULER

For many years our standard GO-4 has been recognized for long lasting durability. We have now engineered a new XTR refuse platform to withstand loads of up to 800lbs. A rugged poly bin and highly fortified rear suspension allows the GO-4 XTR refuse hauler to perform as a nimble trash hauling work horse. Navigate traffic with ease and designed to last for years.



DRIVEWAY COLLECTION



IDEAL FOR PARKS, ZOO'S, COMMERCIAL, AND MORE



LOAD LARGE COMPACTORS



PUBLIC WORKS – CITY OF SCARSDALE NY

“

The Village of Scarsdale NY has been searching for a replacement to their fleet of 3-wheeled sanitation scooters for many years. Through the willingness of the leaders at GO-4 they produced a scooter that not only meets our needs, they exceed what we previously had. Thanks to the team at GO-4 for working with us to find a solution!

”

Benedict Salanitra – Superintendent of Public Works, City of Scarsdale, NY



The GO·4 XTR



The GO-4 XTR is an ideal vehicle for small commercial and municipal applications. Extreme ease of entry from each side. Built for one operator, no need to walk around the entire vehicle for access. Incredible turning radius of near 10 feet. A highly efficient automotive drivetrain with plenty of power and automatic shifting, plus automotive grade components that will last years over the competition.

STANDARD FEATURES:

- Heat
- Hydraulic disc brakes
- Digital main display
- Rear view back up display
- Fortified suspension
- Fortified platform for 800lb lifting capacity
- Automatic transmission
- Adjustable seat
- 12V port

OPTIONS:

- Hinged doors
- Air Conditioning
- Back up sensors with audible alarm
- Premium air ride seat
- Leatherette glove box with USB charging and cup holders
- Steel nerf bars



GO-4 XTR FEATURES



DIGITAL DISPLAY & BACK UP DISPLAY

Electronic display with speedometer, odometer, fuel gauge and more. Including access to basic codes for service. Includes rear back up display, optional sensors.



LIFT CONTROL PAD

Industrial grade control switch for the hydraulic/ electric pump. Can be located near the cab or near the back side for easy viewing while unloading. Rear dump height 54", clearance height 126".



LARGE ENTRY (OPTIONAL DOORS)

The GO-4 XTR centers one operator in the cab which allows easy access from either side. Add durable metal hinged doors for full closure.

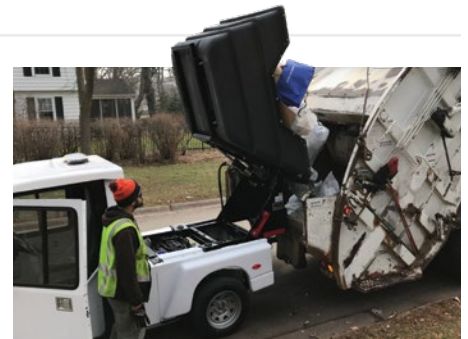


DEPENDABLE DRIVETRAIN

The GO-4 XTR is powered by the latest and most efficient 1.0L gas automotive engine with automatic drivetrain. Full OBD2 access with optional scanner.

DEPENDABLE OPERATION

Proudly built in North America with industrial and automotive grade materials. An ideal use for unloading into large compactors or 5 yard bins. A great fit for dense cities, universities, malls, amusement parks, hospitals, resorts and more.



ENGINE

66 h.p., liquid cooled, 3-cylinder, overhead cam
4-cycle, electronically fuel injected

TRANSMISSION

4-speed automatic
(automotive transaxle with electronically controlled shift)

DIMENSIONS

70" Overall height with cab
57" Overall width
147" Overall length
Wheelbase 95"
Rear dumping height 54"

BRAKING

Hydraulic disc brakes on all three wheels
with dual circuit master cylinder
Parking - Hydraulic over mechanical

ELECTRICAL SYSTEM

Charging - Heavy Duty automotive alternator
Lights - LED headlights
DOT approved LED Stop/Tail/and Turn lights
DOT approved High Visibility Stop and Turn lights
Starting - 12-volt starting motor.
Interlock prevents starter from operating
unless shift lever is in park or neutral.
Gauges - Speedometer, fuel level, hour meter
Indicator lights - Oil pressure warning,
three stage water temperature light
(blue/ below running temp, red/ above running temp,
off / normal running temp)
Charging system, Low fuel.
Wiring - automotive grade wiring harness
with abrasion resistant protective loom.
Pre wired for Radio and municipal lighting options.

WARRANTY

One year full warranty. Please inquire for details

OPTIONS

Inquire for full offering

SUSPENSION

Front - Leading link suspension
Polyurethane Isolation system
Rear - Independent McPherson strut

CLIMATE CONTROL

Liquid core 20,000 BTU heater/defroster
Air Conditioning optional

STEERING

Adjustable tilt steering wheel
with center mounted horn

FEATURES

3-wheel platform w/Heavy duty tubular steel frame
Aluminum and Plastic Body Panels
3 point shoulder harness seat belt
Outside rear view mirrors
Electric windshield wiper with
intermittent control and windshield washer
Dome light, Floor mat, LTA (lateral thrust alarm) Device
12V DC accessory port for phone, radio, etc.
Back up Camera w/internal digital display(sensors optional)
1.75 cub yd Poly bin w/steel structure and hydraulic pump
(optionally can be fitted with basic flat deck - no hydraulics)
Hinged metal doors optional
Steel Rear & Front Nerf bar bumpers optional
Seat - One passenger adjustable forwards and backwards,
with adjustable back and headrest. 3-point seat belts.

FUEL TANK AND FUEL MILEAGE

9 US gallons. Up to 45 mpg. Inquire for details

WEIGHT CAPACITY

Vehicle weight XTR platform, 1550 lbs.
1900lbs w/ refuse hopper assembly installed
Rated capacity, 1000 lbs including operator

COLOR

White with all black frame and accents (standard)

SPEED

Electronically governed at 25 or 30 mph

GO•4 XTR Hydraulic Refuse Hauler Specifications

Online videos of the XTR available at westwardindustries.com

WESTWARD INDUSTRIES

T: 204.594.4100
F: 204.231.2607
sales@wwi-go4.com

75 Archibald St
Winnipeg, MB
Canada, R2J 0V7
wwi-go4.com

Specifications are subject to change without notice. These vehicles comply with the U.S. D.O.T. vehicle safety standards "motorcycles"; as well as meet E.P.A. and C.A.R.B. standards. Graphics illustrated on the vehicle are strictly for the purpose of this brochure. Municipalities typically outfit the vehicles with proprietary graphics.